

QUESTIONS AND CONCLUSIONS

QUESTIONS 11-12

Q1:



“Despite feeling extremely tired after work, Olivia always spends time reading before going to bed.”

What can we understand from this statement? (1 points)

- A) Olivia dislikes reading but forces herself to do it.
- B) Olivia prioritizes reading even when she is exhausted.
- C) Olivia never gets tired after work.
- D) Olivia only reads when she is not busy.

CONCLUSIONS

Q1: Olivia prioritizes reading even when she is exhausted.

The statement mentions that Olivia is very tired after work but still reads before bed, meaning that reading is important to her. Option B best captures this idea. The other options either contradict the statement or add information that is not mentioned.

SOLUTION IS B

Q2:



“Noah always double-checks his emails before sending them to make sure there are no mistakes.”

What can we understand from this statement? (2 points)

- A) Noah is careless and often makes mistakes in his emails.
- B) Noah values accuracy and wants to avoid errors.
- C) Noah only checks his emails when someone asks him to.
- D) Noah does not send emails frequently.

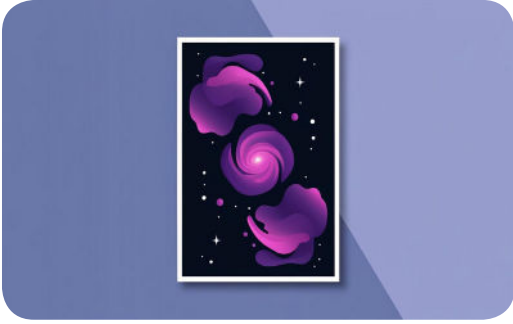
CONCLUSIONS

Q2: Noah values accuracy and wants to avoid errors.

The statement shows that Noah takes the time to double-check his emails, meaning he is careful and wants to be accurate. Option B best reflects this idea. The other options either contradict the statement or introduce information that is not mentioned.

SOLUTION IS B

Q3:



“Even though Ethan had never tried painting before, he spent hours practicing every day until he created a piece he was proud of.”

What can we understand from this statement? (3 points)

- A) Ethan gave up quickly because painting was difficult for him.
- B) Ethan was naturally talented at painting and didn't need practice.
- C) Ethan was determined to improve despite his lack of experience.
- D) Ethan only painted once and decided not to continue.

CONCLUSIONS

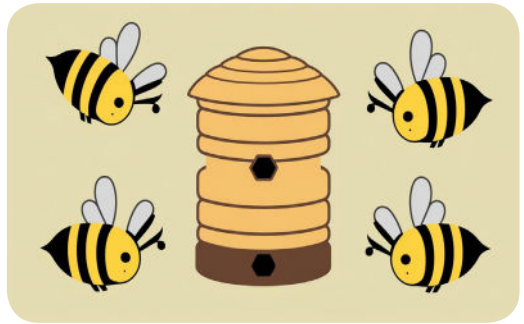
Q3: Ethan was determined to improve despite his lack of experience.

The statement emphasizes that Ethan had never painted before but practiced daily until he achieved success. This shows determination and effort. The other options contradict the idea of consistent practice and persistence.

SOLUTION IS C

Read the text and answer the questions. (4-6)

Q4:



Beehives are highly organized structures where thousands of bees work together. At the center of the hive is the queen bee, the only fertile female responsible for laying eggs. She can lay up to 2,000 eggs per day, ensuring the colony's survival. Worker bees, which are all female, have different roles such as gathering nectar, building honeycombs, and protecting the hive. Drone bees, the males of the colony, have only one purpose: mating with the queen. Once a drone mates, it dies shortly afterward. The queen bee releases pheromones that help maintain order in the hive. If the queen becomes weak or dies, worker bees raise a new queen by feeding a larva with royal jelly. Without a strong queen, the entire hive could collapse.

What is the main role of worker bees in the hive? (4 points)

- A) Laying eggs to increase the colony's population.
- B) Mating with the queen to produce more bees.
- C) Performing different tasks such as collecting nectar and protecting the hive.
- D) Controlling the behavior of the queen bee.

CONCLUSIONS

Q4: Performing different tasks such as collecting nectar and protecting the hive.

Worker bees have multiple responsibilities in the hive, including gathering food, making honey, and defending the colony.

SOLUTION IS C

Q5: Which statement is incorrect according to the paragraph? (5 points)

- A) Drone bees die after mating with the queen.
- B) The queen bee lays thousands of eggs to maintain the colony.
- C) Worker bees are male and perform many different tasks.
- D) The hive can collapse if the queen is weak or dies

CONCLUSIONS

Q5: Worker bees are male and perform many different tasks.

Worker bees are actually female, not male. Male bees (drones) only serve one purpose: mating with the queen.

SOLUTION IS C

Q6: What is the best title for this paragraph? (6 points)

- A) The Importance of Bees in Nature
- B) The Life of a Queen Bee
- C) The Structure and Roles in a Beehive
- D) How Bees Make Honey

CONCLUSIONS

Q6: The Structure and Roles in a Beehive.

The paragraph describes the organization of the hive and the different roles of bees, making this the most suitable title.

SOLUTION IS C

Q7:



Rearrange the following sentences to form a well-structured paragraph.

- I. Over time, it became a national holiday in many countries, recognizing the struggles and contributions of workers.
- II. Labor Day originated in the late 19th century as a response to poor working conditions and long hours.
- III. Many nations celebrate it with parades, speeches, and events that highlight workers' rights.
- IV. It was first observed through protests and strikes demanding fair wages and better working conditions.
- V. Today, it serves as both a tribute to workers and a reminder of the importance of labor rights.

Which of the following is the correct order? (7 points)

- A) II – IV – I – III – V
- B) IV – II – I – V – III
- C) II – I – IV – III – V
- D) I – II – III – IV – V

CONCLUSIONS

Q7: I – IV – I – III – V

II (Why it started) – Labor Day began due to poor working conditions. IV (How it started) – It was first observed through protests and strikes. I (Recognition) – Over time, it became a national holiday. III (Celebration) – Countries celebrate it with parades and speeches. V (Modern significance) – It serves as a tribute to workers and labor rights. This follows the correct historical progression.

SOLUTION IS A