

QUESTIONS AND CONCLUSIONS

QUESTIONS 11-12

Q1:

One ticket to Moonlight Park, please.



Zion

That's \$10.



Here you go.



Zion

What did Zion buy? (1 point)

- A) A bus ticket
- B) A park ticket
- C) A movie ticket
- D) A train ticket

Q2:

I'll have the mushroom soup.



Milo

Would you like bread with that?



Waiter (Zyphir)

Yes, please!



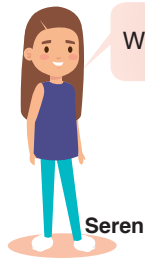
Milo

What did Milo order? (1 point)

- A) A sandwich
- B) A salad
- C) A soup
- D) A pizza

QUESTIONS AND CONCLUSIONS

Q3:



Wow! I have a turtle.



I have a pet lizard named Tango.

What pet does Lion have? (1 point)

- A) A turtle
- B) A dog
- C) A lizard
- D) A cat

Q4: Riven: Do you have this jacket in blue?

Salesperson (Nyx): Yes! Here it is.

Riven: Great, I'll take it.

What color jacket does Riven want? (1 point)

- A) Black
- B) Red
- C) Blue
- D) Green

Q5: Tarin: What time is it?

Ezrie: It's 3:30 PM.

What time is it? (1 point)

- | | |
|----------|----------|
| A) 14:00 | B) 15:30 |
| C) 16:15 | D) 17:00 |

- Q6:**
- **Durian:** Thailand–500 kg, Canada–200 kg, Brazil–150 kg, Germany–300 kg
 - **Rambutan:** Thailand–400 kg, Canada–100 kg, Brazil–180 kg, Germany–250 kg

Which country bought the most durian? (2 points)

- A) Canada
- B) Thailand
- C) Germany
- D) Brazil

QUESTIONS AND CONCLUSIONS

- Q7:**
- **Zephyr Motors:** 1200 cars
 - **Argon Auto:** 900 cars
 - **Velospeed:** 1500 cars

Which car brand sold the least?

(2 points)

- A) Zephyr Motors
- B) Argon Auto
- C) Velospeed
- D) All sold the same

- Q8:**
- **Pistachio:** 35%
 - **Fig & Honey:** 25%
 - **Black Sesame:** 20%
 - **Chestnut:** 20%

Which flavor is the most popular? (2 points)

- A) Pistachio
- B) Chestnut
- C) Fig & Honey
- D) Black Sesame

- Q9:**
- **Shadow Eclipse:** 500 tickets
 - **Neon Nights:** 700 tickets
 - **Lost Horizon:** 400 tickets

Which movie sold the most tickets?(2 points)

- A) Shadow Eclipse
- B) Neon Nights
- C) Lost Horizon
- D) All sold the same

- Q10:**
- **Reykjavik:** 85 mm
 - **Helsinki:** 60 mm
 - **Edinburgh:** 90 mm

Which city gets the most rain? (2 points)

- A) Reykjavik
- B) Helsinki
- C) Edinburgh
- D) All get the same

QUESTIONS AND CONCLUSIONS

Q11:

Good morning! I'd like a large cappuccino, please.

Of course! Would you like any sugar or syrup with that?

No, just plain, please.

Barista (Nyra)

Ronan

Alright, that will be \$4.50. Would you like a receipt?

No, thanks!

Barista (Nyra)

Ronan

What can we say based on the dialogue?
(3 points)

- A) Ronan ordered a tea.
- B) Ronan wanted extra sugar in his coffee.
- C) Nyra is a customer at the café.
- D) Ronan did not want any sugar or syrup.

Q12:

Excuse me, do you know where the library is?

Yes! Walk straight down this street and turn left at the traffic light. It will be on your right.

Thanks so much!

No problem! Have a good day!

Kellan

Liora

Kellan

Liora

What does Liora tell Kellan to do?
(3 points)

- A) Go right at the traffic light.
- B) Walk straight, then turn left.
- C) Walk backward to find the library.
- D) Take a bus to the library.

QUESTIONS AND CONCLUSIONS

Q13:



Zylar

Do we need anything else from the store?

Hmm, we have bread, eggs, and milk... but we're out of oranges.



Maris

Okay, I'll grab a few.

Thanks! Oh, and maybe some chocolate too?



Maris



Zylar

Alright, but only if you share!



Zylar

Which of the following is true based on the dialogue? (3 points)

- A) Maris does not want anything from the store.
- B) Zylar will buy oranges and chocolate.
- C) Zylar refuses to buy oranges.
- D) Maris asks for bananas

Q14:

Did you watch "The Lost Planet" last night?



Eldrin

Yes! It was amazing! The special effects were incredible.



Sienna

I know, right? The spaceship scenes looked so real! I know, right? The spaceship scenes looked so real!



Eldrin

And the story was great too. I loved the plot twist at the end.



Sienna

What do Eldrin and Sienna think about the movie? (3 points)

- A) They both enjoyed it.
- B) Eldrin hated it, but Sienna liked it.
- C) Sienna did not watch the movie.
- D) The movie had no special effects.

QUESTIONS AND CONCLUSIONS

Q15:

Hey, what are you doing this weekend?

I think I'll go hiking on Saturday if the weather is nice.

That sounds fun! Where are you going?

To Blue Ridge Mountain. It's not too far from here.

Sylvie

Orin

Which of the following can we infer? (3 points)

- A) Sylvie does not like hiking.
- B) Sylvie is planning to go to the beach.
- C) Sylvie will hike only if the weather is good.
- D) Orin does not want to know about Sylvie's plans.

Q16:

Stained glass has been used in churches and cathedrals for centuries. These colorful windows tell religious stories and add beauty to buildings. During the Middle Ages, stained glass was a symbol of wealth and power. Today, artists still use this technique to create modern designs.



What is the best title for this passage?

(3 points)

- A) The Science of Glassmaking
- B) The Evolution of Stained Glass
- C) How to Make a Stained Glass Window
- D) The Importance of Religious Art

Q17:

Some deep-sea creatures can produce their own light. This process, called bioluminescence, helps them attract prey or escape predators. Species like the anglerfish and jellyfish glow in the dark waters. Scientists are studying bioluminescence to develop new medical technologies.



What is the best title for this passage?
(3 points)

- A) Strange Creatures of the Ocean
- B) The Science Behind Glowing Animals
- C) The Life Cycle of Jellyfish
- D) Why Deep-Sea Fish Are Dangerous

Q18:

Some islands appear on old maps but do not exist today. These islands may have been mistakes by explorers or have eroded over time. One famous example is Sandy Island, which was on maps for over a century. Scientists use satellite images to confirm if islands are real or myths.



What is the best title for this passage?
(4 points)

- A) The Disappearance of Islands
- B) How Explorers Made Maps
- C) The Secret of the Deep Ocean
- D) Why Islands Are Important

Q19: Chairs have existed for thousands of years, but not all look the same. Some modern chairs are designed for style rather than comfort. There are chairs shaped like hands, eggs, and even giant shoes. Museums and collectors pay high prices for rare and artistic chairs.



What is the best title for this passage?

(4 points)

- A) The History of Furniture
- B) The Evolution of Office Chairs
- C) Unique and Creative Chairs
- D) How to Choose a Comfortable Chair

Q20: Wallpaper has been used in homes for hundreds of years. In the 18th century, certain patterns showed wealth and social status. Some wallpapers even contained secret symbols and hidden messages. Today, wallpaper is often used for decoration rather than meaning.



What is the best title for this passage?

(4 points)

- A) The Hidden Messages in Wallpaper
- B) Why Paint Is Better Than Wallpaper
- C) The Most Expensive Wallpapers in History
- D) How to Decorate Your Walls

Q21: Some deserts have dunes that produce a deep humming sound when the sand moves. This natural phenomenon, called “singing sand,” happens when grains of sand rub against each other in dry conditions. The sound is often compared to a low-pitched musical note or a distant airplane. Scientists believe the shape, size, and moisture level of the sand affect the sound.



Which of the following can be said about singing sand dunes? (5 points)

- A) They only exist in cold climates.
- B) The noise is always loud and high-pitched.
- C) Scientists believe several factors influence the sound.
- D) The phenomenon was first discovered in the 21st century

Q22: In the late 19th and early 20th centuries, cities like New York and London used pneumatic tubes to transport mail and small packages. These systems relied on air pressure to push canisters through underground networks. Although they were once considered the future of urban communication, they became less popular with the rise of digital technology and modern postal services.



Which of the following cannot be said about pneumatic tube systems? (5 points)

- A) They were once used in major cities.
- B) They are still the primary method of sending mail today.
- C) They used air pressure to transport objects.
- D) They were completely abandoned in the 19th century.

Q23:

Ancient Romans built structures like the Pantheon and aqueducts using a special type of concrete that has lasted for centuries. Unlike modern concrete, which can crack and weaken over time, Roman concrete becomes stronger when exposed to seawater. Scientists discovered that the secret ingredient is volcanic ash, which reacts with water to form a durable mineral structure.



Which of the following can be said about Roman concrete? (5 points)

- A) Its durability is due to volcanic ash.
- B) It becomes weaker when exposed to water.
- C) It was only used for building roads.
- D) It was first invented in the 20th century.

Q24:

In Srinagar, India, there is a unique post office that floats on Dal Lake. It operates from a houseboat and serves locals and tourists. Visitors can send letters with special stamps featuring the post office itself. It has been in operation for many years and continues to be an important part of the community.



Which of the following cannot be said about the floating post office? (5 points)

- A) It is located in India.
- B) It operates from a houseboat.
- C) It serves both locals and tourists.
- D) It was built in the 18th century.

Q25: Certain animals, like chameleons and cuttlefish, can change color to blend into their surroundings or communicate with others. This ability is due to special skin cells called chromatophores, which contain different pigments. Some color changes happen instantly, while others take time depending on the species and environment.



Which of the following can be said about color-changing animals? (5 points)

- A) The main reason for color change is always camouflage.
- B) All animals can change color instantly.
- C) Chameleons and cuttlefish use chromatophores to change color.
- D) The process does not involve skin cells.

Q26:

Brand	Market Share (%)
Lotus	40
Nimbus	25
Atlas	15
Eclipse	10
Zenith	5
Others	5

Which brand holds the second-largest market share in the global smartphone market?

(6 points)

- A) Atlas
- B) Nimbus
- C) Zenith
- D) Eclipse

Q27:

City	2020	2021	2022	2023
Lorelei	16.2	17.5	16.8	17.0
Juno	13.0	13.5	14.2	13.8
Nivelle	10.5	10.8	10.7	10.9
Ely	15.3	15.6	15.2	15.5

Which city had the highest temperature increase from 2020 to 2021? (6 points)

- A) Lorelei
- B) Juno
- C) Nivelle
- D) Ely

QUESTIONS AND CONCLUSIONS

Q28:

Country	2021	2022	2023
Malawi	1800	1900	2000
Slovenia	750	800	850
Seychelles	1250	1350	1450
Paraguay	650	700	750

Which country has the most consistent rainfall over the 3 years? (6 points)

- A) Malawi
- B) Slovenia
- C) Seychelles
- D) Paraguay

Q29:

Major	Enrollment (Students)
Software Engineering	5000
Environmental Studies	4500
Urban Planning	4200
Public Health	3000
Fine Arts	2500

What percentage of total enrollment is represented by students in the Software Engineering major? (6 points)

- A) 25%
- B) 30%
- C) 35%
- D) 40%

Q30:

Category	January	February	March	April
Housing	1200	1200	1200	1200
Groceries	300	350	400	450
Utilities	150	140	160	150
Travel	100	120	140	160
Dining Out	80	90	110	130

Which month had the largest increase in total expenses? (6 points)

- A) January
- B) February
- C) March
- D) April

Q31: I. The colors blend seamlessly, creating a beautiful arc across the sky.

II. Rainbows appear when sunlight passes through rain droplets, bending and reflecting light.

III. They are often seen after a storm or during moments of sunshine following rainfall.

IV. Many cultures consider rainbows to be symbols of hope and beauty.

What is the correct order to form a meaningful text? (7 points)

- A) I – II – III – IV
- B) II – III – I – IV
- C) III – IV – II – I
- D) IV – I – I – III

- Q32:** I. It can hold essentials like a phone, wallet, and makeup, making it an indispensable accessory.
- II. Purses come in many styles, sizes, and materials to fit different needs and occasions.
- III. A purse is not just a functional item but also a fashion statement.
- IV. Whether small and simple or large and luxurious, a purse can complement any outfit.

What is the correct order to form a meaningful text? (7 points)

- A) II – IV – III – I
- B) III – IV – I – II
- C) II – I – IV – III
- D) IV – III – II – I

- Q33:** I. Cream is used in a variety of dishes, from soups to desserts, enhancing flavor and texture.
- II. Originally, cream was skimmed off milk, and people began to use it as a rich, tasty addition to meals.
- III. Today, cream is also used in skincare products for its moisturizing properties.
- IV. It is also a key ingredient in making butter, contributing to its creamy consistency.

What is the correct order to form a meaningful text? (7 points)

- A) II – I – IV – III
- B) I – III – IV – II
- C) II – IV – I – III
- D) III – I – II – IV

- Q34:** I. The colors of the rainbow are red, orange, yellow, green, blue, indigo, and violet.
- II. A rainbow is often seen when sunlight shines after a rainstorm.
- III. The sunlight is refracted through the raindrops, breaking up the light into its different colors.
- IV. In some cultures, rainbows are seen as symbols of promise or good fortune.

What is the correct order to form a meaningful text? (7 points)

- A) I – IV – II – III
- B) I – III – II – IV
- C) II – III – I – IV
- D) III – II – IV – I

- Q35:** I. It can be used to make creamy sauces, soups, and even ice cream.
- II. Cream is made by separating the fat from milk, resulting in a rich, smooth liquid.
- III. Cream also plays a role in baking, where it is used in pastries and cakes to add moisture.
- IV. In the kitchen, cream is a versatile ingredient with many culinary uses.

What is the correct order to form a meaningful text? (7 points)

- A) III – I – II – IV
- B) IV – II – I – III
- C) I – IV – III – II
- D) II – IV – I – III